

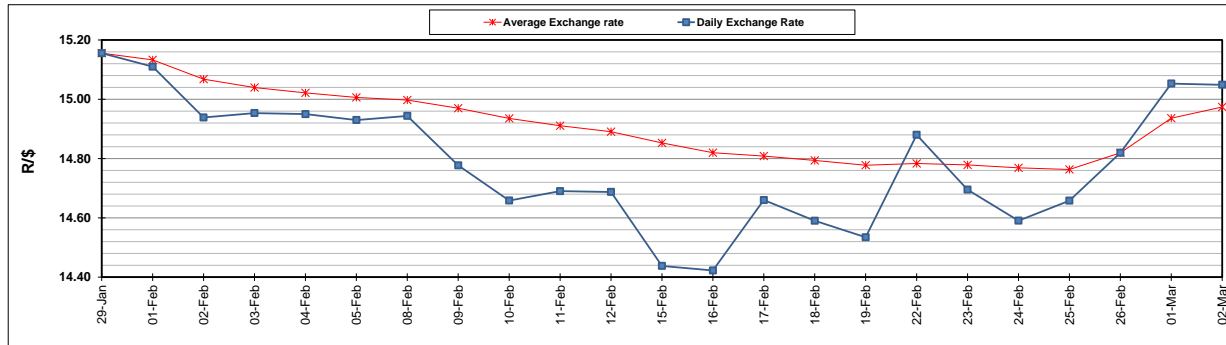
	PETROL 95 ULP	PETROL 93 ULP & LRP	DIESEL 0.05%	DIESEL 0.005%	ILL. PAR.
GAUTENG PUMP PRICE (SA c/l) AS FROM 03/03/2021	1,632.000	1,615.000	-	-	-
WHOLESALE PRICE (SA c/l) AS FROM 03/03/2021	-	-	1,412.420	1,416.820	845.688
SINGLE NATIONAL MAXIMUM RETAIL PRICE	-	-	-	-	1,071.000
BASIC FUEL PRICE - 02/03/2021 (SA c/l)	702.883	693.571	674.661	678.226	653.673
PRESS RELEASE CONTRIBUTION TO BFP 26/02/2021 - 02/03/2021 (SA c/l)	600.170	593.170	599.630	602.030	586.128
UNIT OVER/(UNDER) RECOVERY - 02/03/2021 (SA c/l)	(102.713)	(100.401)	(75.031)	(76.196)	(67.545)
AVERAGE BASIC FUEL PRICE 26/02/2021 - 02/03/2021	711.389	701.716	684.928	688.360	663.074
AVERAGE UNIT OVER/(UNDER) RECOVERY 26/02/2021 - 02/03/2021	(111.219)	(108.546)	(85.298)	(86.330)	(76.946)

ANALYSIS MOVEMENT OF AVERAGE OVER/(UNDER) RECOVERY

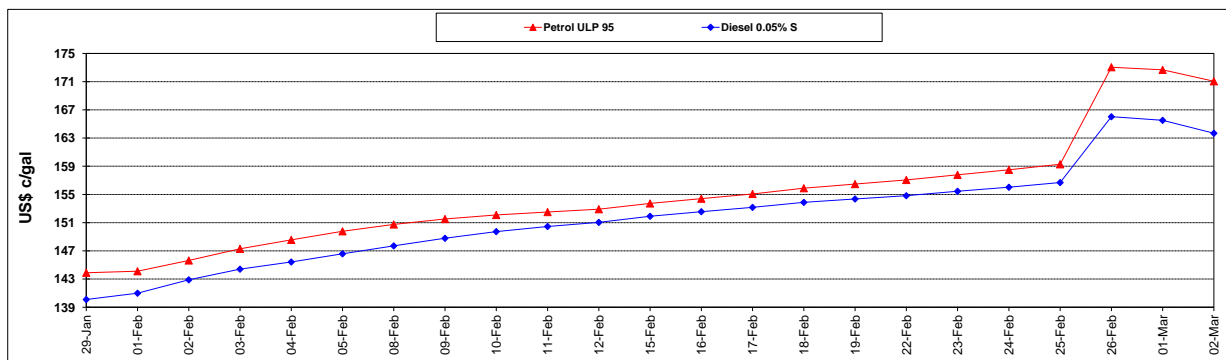
	PETROL 95	PETROL 93	DIESEL 0.05%	DIESEL 0.005%	ILL. PAR.
- MOVEMENT IN INTERNATIONAL PRODUCT PRICES	(101.214)	(98.677)	(75.665)	(76.648)	(67.620)
- MOVEMENT IN EXCHANGE RATE	(10.005)	(9.869)	(9.633)	(9.682)	(9.326)
AVERAGE UNIT OVER/(UNDER) RECOVERY 26/02/2021 - 02/03/2021	(111.219)	(108.546)	(85.298)	(86.330)	(76.946)

R/\$ EXCHANGE RATE - (R/\$15.0488 - 02/03/2021)

EXCHANGE RATE USED IN BASIC FUEL PRICE



INTERNATIONAL PRODUCT PRICES OF BASKET USED IN BASIC FUEL PRICE



BASIC FUEL PRICE IN SA CENTS PER LITRE

